



# THE GREENE

*Luxury Living*



WELCOME TO LUXURY LIVING AT THE GREENE

THE GILBERT + THE AUSTIN + THE TOWNHOUSES

Your life just took on a whole new meaning

# IMAGINE YOUR HOME NESTLED AT THE HEART OF EVERYTHING

Experience luxury apartment living in modern studios, sleek condo-style apartments and spacious townhomes. Your home comes with all the perks of living in a walkable small town setting. It's right around the corner, near everywhere you want to be.

Stroll over to the bookstore for the latest bestseller, enjoy a refreshingly cool cup of frozen yogurt, grab your lawn chair and enjoy a concert or event in the square after dining at one of our many first-class restaurants. It's all part of being a resident in one of the hottest destinations in the Dayton, Ohio area.

OVER 100 RETAIL STORES AND RESTAURANTS INCLUDING

FITNESS STUDIOS ■ COFFEE HOUSES ■ BARS ■ LOUNGES ■ OUTDOOR SPACES ■ LIVE MUSIC & EVENTS  
COMEDY CLUB ■ ENTERTAINMENT ■ MOVIE THEATRE ■ HEALTH & WELLNESS CENTERS ■ SALON & DAY SPA



IT'S A UNIQUE COMBINATION THAT ONLY HAPPENS IN ONE PLACE

A vibrant community awaits just beyond your doorstep, but on the inside lies a luxurious and relaxing living space, filled with modern amenities and state-of-the-art designs.

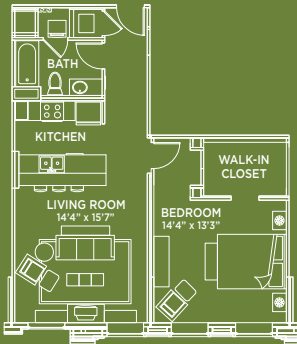


LUXURY LIVING WITH ALL THE AMENITIES

- VARIETY OF FLOOR PLANS
- NINE-TO-TEN FOOT CEILINGS & OVERSIZED WINDOWS
- WASHER/DRYER IN-UNIT
- STAINLESS STEEL APPLIANCES & GRANITE COUNTERTOPS
- CERAMIC KITCHEN FLOORING
- MODERN & CONTEMPORARY FIXTURES
- CONTROLLED ACCESS ENTRANCE & COVERED PARKING
- PET-FRIENDLY
- STATE-OF-THE-ART FITNESS CENTER
- COMMUNITY CLUB ROOM
- 24-HOUR ON-SITE SECURITY & EMERGENCY MAINTENANCE
- ONLINE RENTAL PAYMENT OPTIONS
- DRY CLEANING AND PACKAGE PICK-UP AND DROP-OFF
- RESIDENT VALUE PROGRAM OFFERING THE GREENE DISCOUNTS EXCLUSIVE TO RESIDENTS

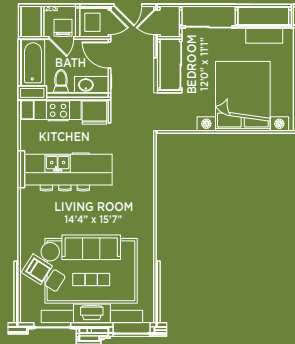
# THE AUSTIN

Located in the Von Maur district of The Greene, offers 11 different floor plans, blending relaxation and sophistication to create the ideal place. Luxury living at the Austin is how home should feel.



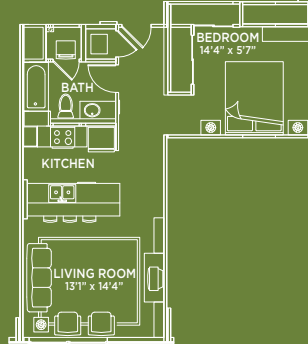
**1A**  
845 SF - 1 Bedroom, 1 Bath

\$ EXP:



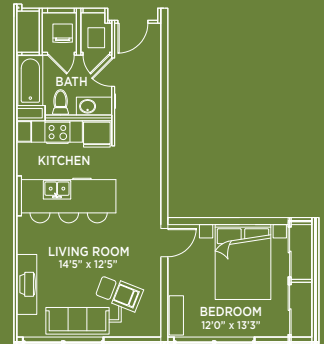
**1B**  
743 SF - 1 Bedroom, 1 Bath

\$ EXP:



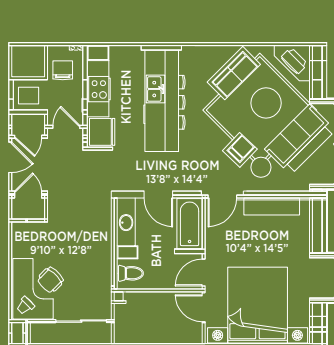
**1C**  
703 SF - 1 Bedroom, 1 Bath

\$ EXP:



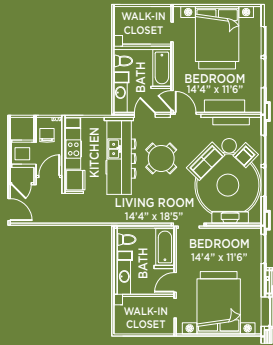
**1D**  
743 SF - 1 Bedroom, 1 Bath

\$ EXP:



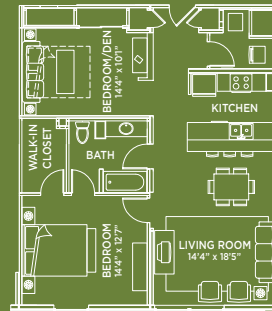
**2A**  
988 SF - 2 Bedroom, 1 Bath

\$ EXP:



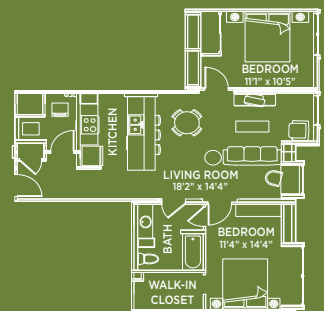
**2B**  
1,161 SF - 2 Bedroom, 2 Bath

\$ EXP:



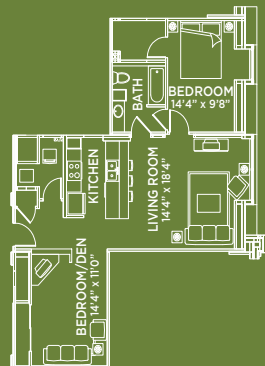
**2C**  
1,063 SF - 2 Bedroom, 1 Bath

\$ EXP:



**2D**  
1,026 SF - 2 Bedroom, 1 Bath

\$ EXP:



**2E**  
1,059 SF - 2 Bedroom, 1 Bath

\$ EXP:

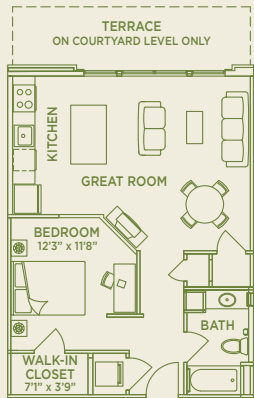


**3A**  
2,050 SF - 3 Bedroom, 2 Bath

\$ EXP:

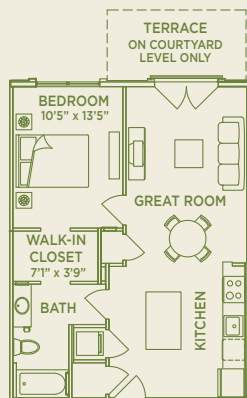
# THE GILBERT

Luxury Living at The Greene starts with The Gilbert. With 11 unique and spacious floor plans, featuring the most ideal and central location above prime retail stores - It's time to make coming home the best part of your day.



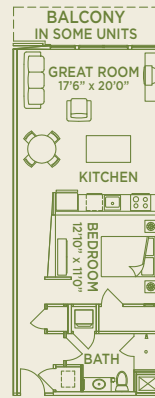
**1A**  
690 SF - 1 Bedroom, 1 Bath

\$ EXP:



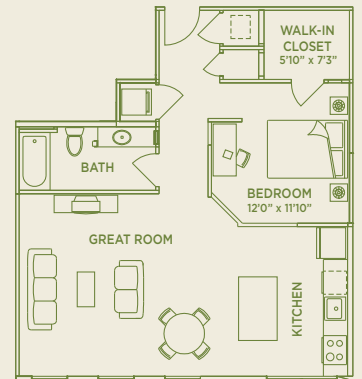
**1A1**  
690 SF - 1 Bedroom, 1 Bath

\$ EXP:



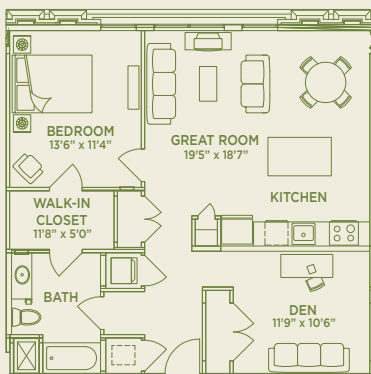
**1B**  
796 SF - 1 Bedroom, 1 Bath

\$ EXP:



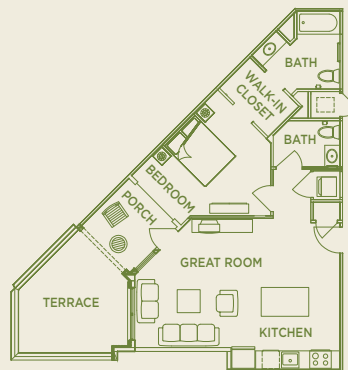
**1C**  
825 SF - 1 Bedroom, 1 Bath

\$ EXP:



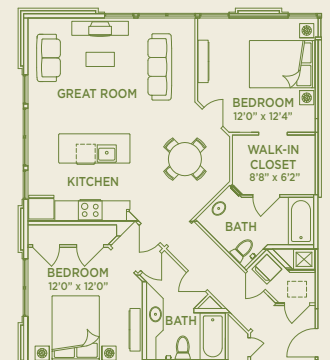
**1D**  
960 SF - 1 Bedroom, 1 Bath

\$ EXP:



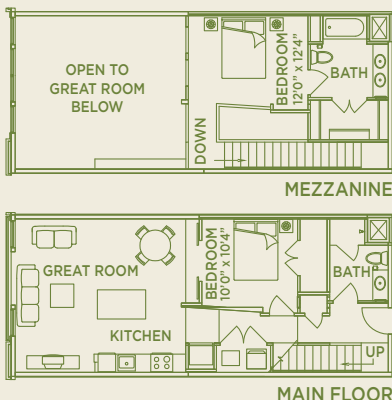
**1EHC**  
784 SF - 1 Bedroom, 1.5 Bath

\$ EXP:



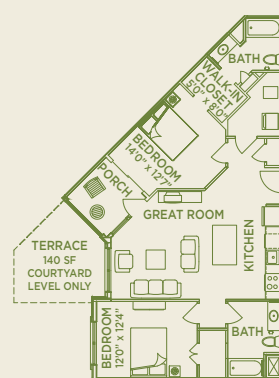
**2A**  
1,151-1,200 SF - 2 Bedroom, 2 Bath

\$ EXP:



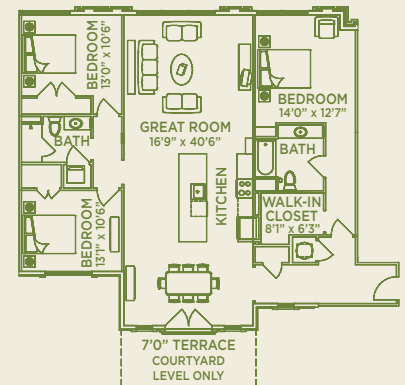
**2B**  
1,230 SF - 2 Bedroom, 2 Bath

\$ EXP:



**2C**  
1,034 SF - 2 Bedroom, 2 Bath

\$ EXP:

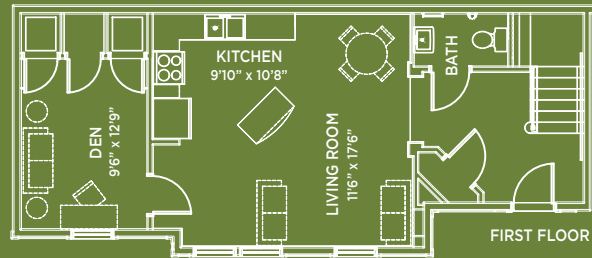
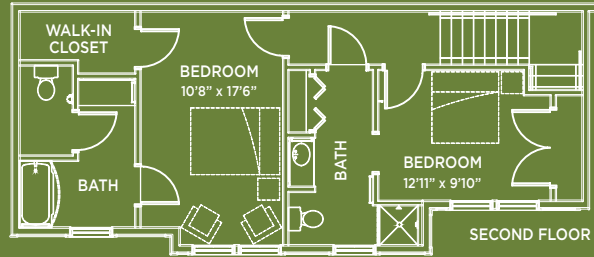
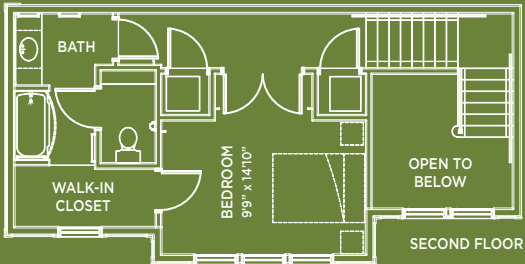


**3A**  
1,690 SF - 3 Bedroom, 2 Bath

\$ EXP:

# TOWNHOMES

Located on Buckeye Lane, offer their own private entrances and private alarm-monitoring systems. Enjoy features that range from beautiful patios to elevated open foyers with 20 ft. ceilings. Experience spacious modern living in the heart of it all.

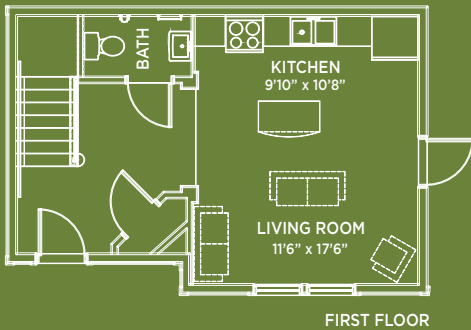
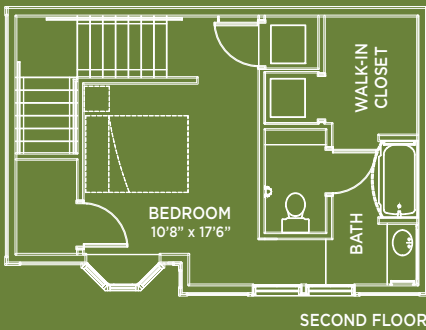


**T1**  
1,009 SF - 1 Bedroom, 1.5 Bath

**T2**  
1,318 SF - 2 Bedroom, 2.5 Bath

\$ EXP:

\$ EXP:



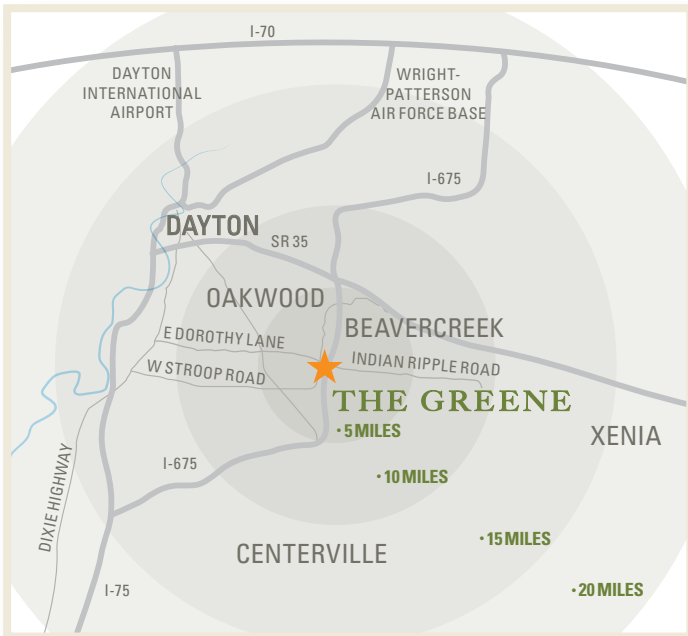
**T3**  
743 SF - 1 Bedroom, 1.5 Bath

\$ EXP:

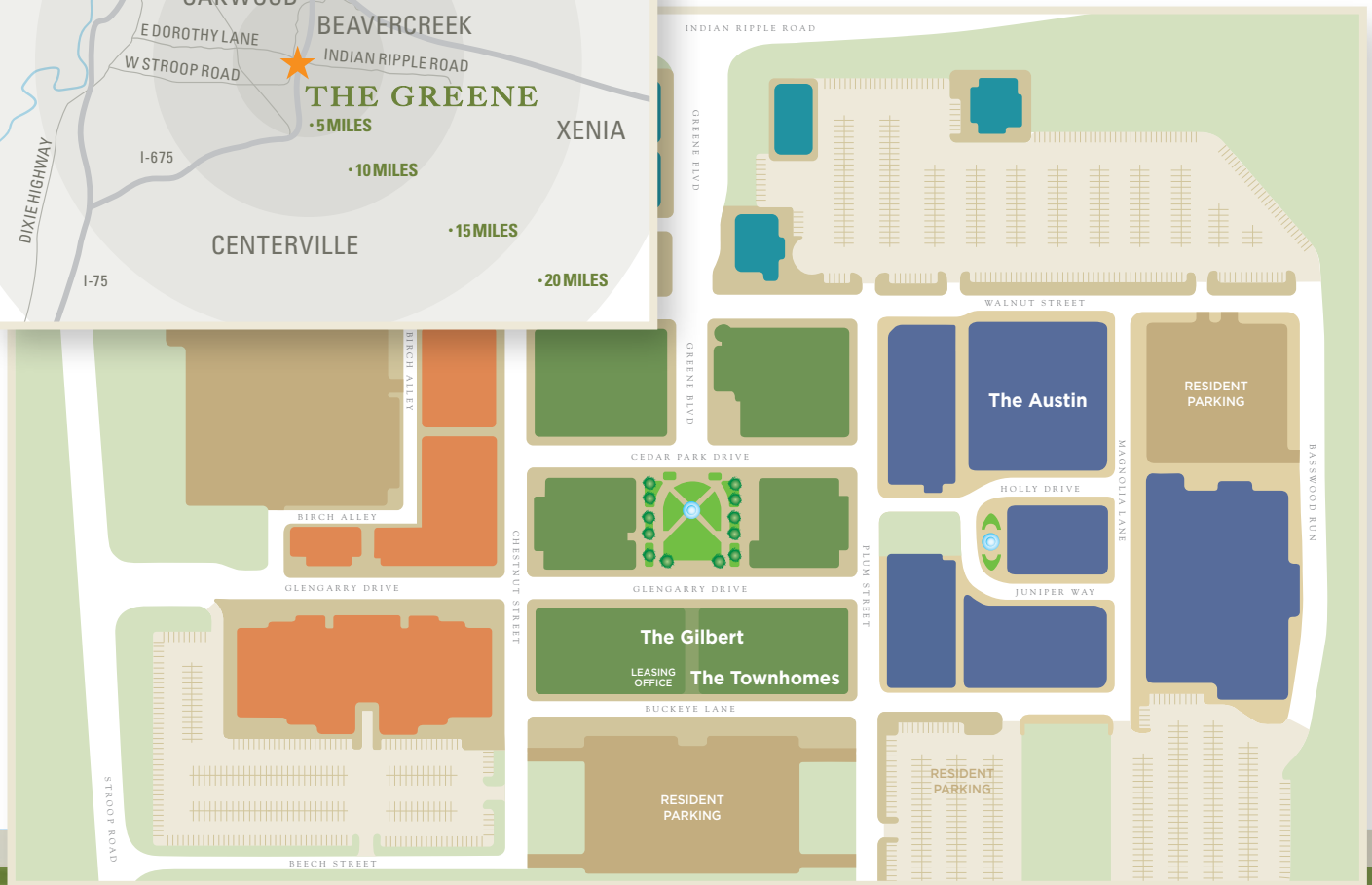
## NOTES

# BE A PART OF IT STARTING TODAY

Experience the The Greene lifestyle - luxury, location and convenience



The Greene is unlike anything the Miami Valley has experienced before. Our location puts you in the center of Dayton's most affluent and growing suburbs: Beavercreek, Centerville, and Oakwood. The Greene is conveniently located right off I-675, within easy access to Routes I-70, I-35 and I-75 - Just 10 minutes from Wright Patterson Air Force Base and Downtown Dayton.



**THE GREENE**  
*Luxury Living*

Luxury Living at The Greene ■ 4450 Buckeye Lane, Beavercreek, Ohio 45440  
(937) 490-4944 ■ [info@livingatthegreene.com](mailto:info@livingatthegreene.com) ■ [livingatthegreene.com](http://livingatthegreene.com)

